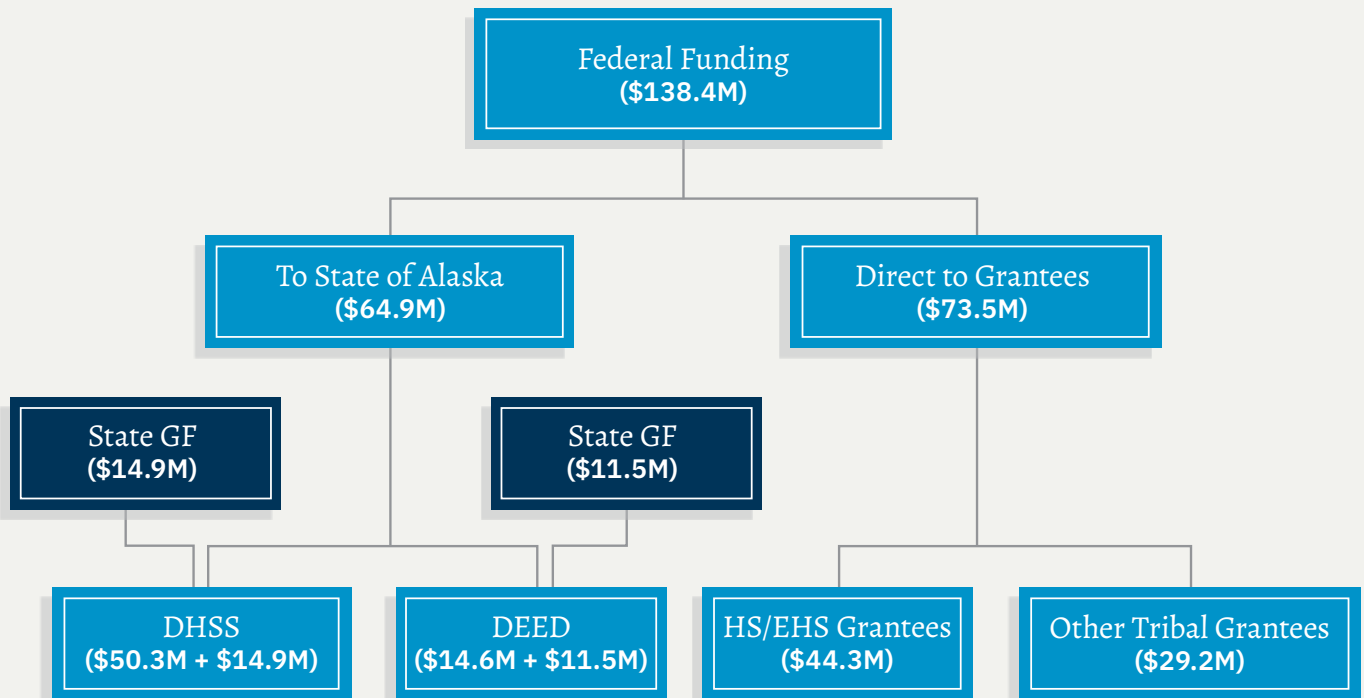
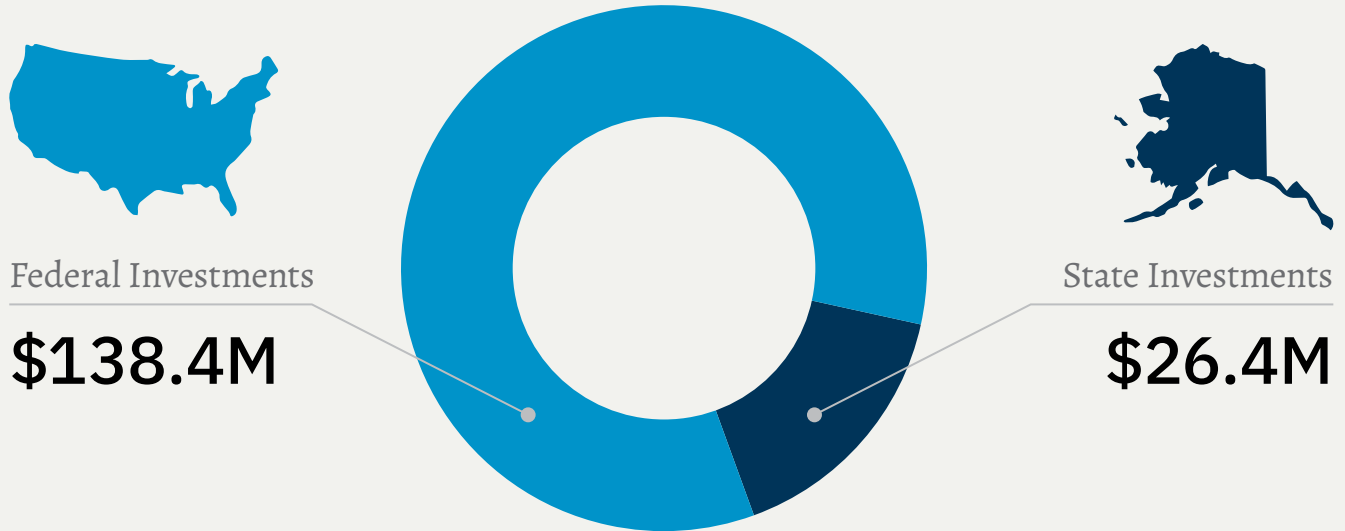
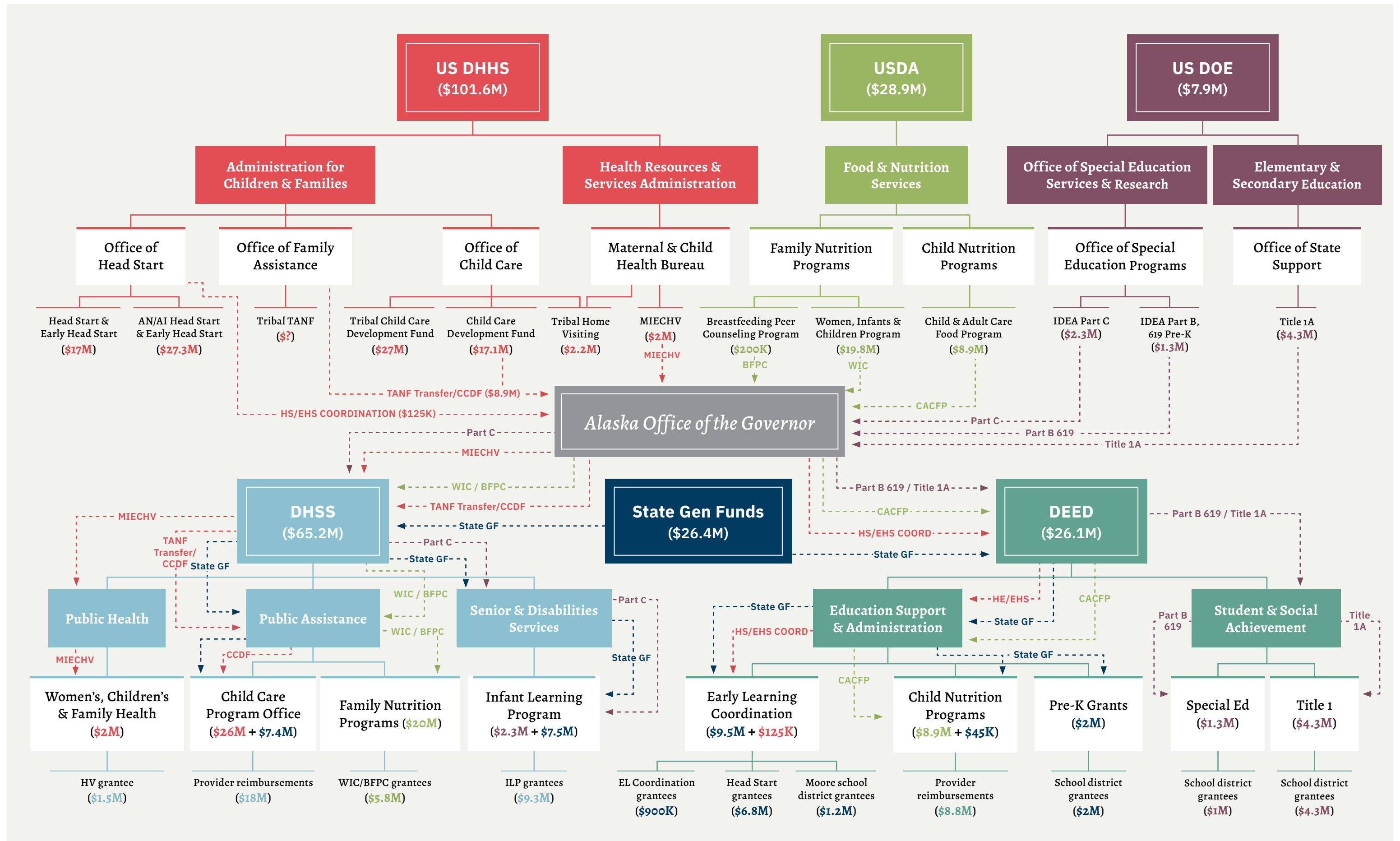


Early Childhood Funding in Alaska FY 18



Alaska spends < 1% of its General Fund directly on early childhood investments.

This analysis does not include ALL funding streams that benefit young children and their families in Alaska. It focuses on recurring state and federal investments that target pregnant/postpartum women and young children. State or federal funding for programs/services with broader eligibility, one-time grants, and Tribal, nonprofit or other local government investments are not included.



EARLY CHILDHOOD FUNDING MAP GLOSSARY OF FEDERAL FUNDING SOURCES

US DHSS FUNDING

Child Care and Development Fund (CCDF) & Tribal Child Care Development Fund (CCDF) & Temporary Assistance for Needy Families (TANF) Transfer

CCDF is a block grant that provides funding for the Child Care Assistance Program (CCAP) for low-income families who meet certain eligibility requirements, as well as childcare licensing, quality improvement and workforce development. Alaska also elects to add some of its TANF funds to the CCAP. Qualified childcare providers are reimbursed directly by the State for childcare expenses from qualified families. Tribal organizations are eligible for a separate CCDF funding stream and Tribal TANF transfer. Matching funds are required from the state.

Head Start and Early Head Start (HS/ES) & Alaska Native/American Indian (AN/AI) Head Start/Early Head Start (AN/AI HS/EHS)

HS/EHS promotes the comprehensive development and school readiness of young children age birth to five from low-income families. Grants are made directly to local agencies, who are required to provide up to 20% matching funds. Tribal organizations are eligible to receive AN/AI HS/EHS grants to serve AN/AI children through a separate funding stream. The state is required to provide coordination and receives a small grant to do so. The state provides additional grants to HS/EHS and AN/AI HS/EHS providers to assist with the federal match.

Maternal Infant Early Childhood Home Visiting (MIECHV) Program & Tribal Home Visiting (Tribal HV)

The MIECHV program connects expectant mothers and parents with children under two with a support person to learn about necessary resources and skills to raise children who are physically, socially, and emotionally healthy and ready to learn. The program serves families who are at-risk or live in at-risk communities. The State awards a grant to a local agency to provide home visiting services. Tribal organizations are eligible for a separate funding stream to specifically target AN/IA expectant parents and families with young children. Matching funds are not required.

USDA FUNDING

Women, Infants, and Children (WIC) & Breastfeeding Peer Counseling Program (BFPC)

WIC provides nutrition and breastfeeding education, nutritious foods, and referrals to pregnant women, breastfeeding mothers and children under age five who have a nutritional need and are <185% FPL. The State awards grants to local agencies to provide WIC services. WIC providers are also eligible for BFPC grants to provide peer counseling to WIC mothers. Matching funds are not required.

Child and Adult Care Food Program (CACFP)

CACFP provides funding for healthy meals and snacks to children and adults at qualified locations. The State provides reimbursements to childcare centers, after school programs, family day care providers, homeless shelters, and adult day programs. Reimbursement rates vary by participant eligibility. Matching funds are not required, but a small Maintenance of Effort contribution is.

US DOE FUNDING

IDEA Part C

IDEA Part C provides early intervention services to children birth to age two with developmental delays or a condition with a high probability of a resulting delay or disability. Any child experiencing a 50% delay is eligible for services in Alaska. The State awards grants to local agencies to provide IDEA Part C. Matching funds are required from the State.

IDEA Part B, Section 619, Preschool Grants

IDEA Part B, Section 619 provides additional formula funding grants for preschool services for children ages three to five with development delays or disabilities. Local Education Authorities (LEAs) apply to the State to access 619 funds. Matching funds are not required.

Title 1, Part A Preschool Programs

Title 1A provides supplemental formula funding specifically for improvements at schools with large concentrations of low-income students. The state distributes Title 1A funds to qualified LEAs. LEAs may elect to use a portion of their Title 1A funds for preschool programming and must disclose this in their State plans. Matching funds are not required.