



ALL ALASKA  
PEDIATRIC  
PARTNERSHIP

# Bi-Annual Impact Report 2023-25

Celebrating **30 Years** of collaboration and care for Alaska's families.

# Table of Contents

<b>Board President Letter</b>	<b>3</b>
<b>Executive Director Letter</b>	<b>4</b>
<b>Our People</b>	<b>5</b>
<b>Board of Directors</b>	<b>6</b>
<b>Staff</b>	<b>8</b>
<b>Our Organization</b>	<b>10</b>
<b>Funding</b>	<b>12</b>
<b>Impact Story: The Work Behind the Work</b>	<b>14</b>
<b>30-Year Timeline</b>	<b>16</b>
<b>Core Programs</b>	
<b>Help Me Grow Alaska</b>	<b>24</b>
<b>Data &amp; Policy</b>	<b>26</b>
<b>Training</b>	<b>28</b>
<b>Partnerships</b>	<b>30</b>
<b>Contributing Partners</b>	<b>32</b>
<b>Ways to Support</b>	<b>33</b>

## Board President Letter

All parents and guardians, at one time or another, run into complex challenges requiring specialized medical care or supportive services for the child and/or their family. Alaska in the 1990s had little access to comprehensive, specialized pediatric care nor a clear pathway to change that reality, leaving both caregivers and providers to navigate on their own a complex landscape of siloed services. Out of this acute need, the All Alaska Pediatric Partnership (A2P2) was born.

**Since its founding in 1995, it has grown into a prominent organization supporting coordinated, universally accessible systems of care for children and their families.** In 2025, A2P2 had one of its strongest years ever, serving thousands of families through its Help Me Grow Alaska program, convening hundreds of partners and stakeholders through its Partnership Meetings, Early Childhood Network, Home Visitor Alliance, and the All Alaska Pediatric Symposium. Behind every successful connection and collaboration are families receiving vital assistance when needed most and providers who are better supported to provide them with care.

**I was drawn to A2P2's mission as a parent of children with complex medical needs.** Our son was born with severe Hemophilia and at three months had a spontaneous brain bleed where over a quarter of his brain had to be removed. Soon thereafter, he developed a pernicious seizure disorder with a likely debilitating outcome, preventing him from ever walking or talking. Our son became his own medical industry, requiring occupational therapy, speech therapy, physical therapy, and the services of a pediatric neurologist, pediatric hematologist, and his primary care pediatrician. My wife and I were left to navigate and coordinate all these services, effectively necessitating my wife to become the CEO of our son's medical care for years. As parents, these years were beyond daunting, even for a pair of lawyers accustomed to managing and navigating complex systems and laws. One can easily imagine how many families get lost in the gears when navigating their own challenges. My son is now a young adult. At the time of his birth and early childhood, A2P2 was in its infancy, and its program Help Me Grow Alaska was not available as the potentially life-saving resource it currently is for families who find themselves in the category of "involuntary high-end users" of our complicated medical system.

Today, our son still faces many struggles, but he has just completed his first semester at the University of Alaska Anchorage and is a very happy young man looking forward to his future, and this was made possible due to our ability to coordinate his care and support. One of the most rewarding aspects of serving on the A2P2 Board is the staff reports on A2P2's work, both on the macro scale, as well as on the individual single child scale, **and knowing the organization is successful in having a direct positive impact on the lives of Alaska children, one family at a time.**

**Matt Findley, JD**  
*A2P2 Board President*



Our People  
**Board of Directors**

A2P2's Board of Directors brings together individuals and organizations who are strong advocates for children's and families' health and wellness with diverse experience and perspectives that support the organization's mission and infrastructure.



Board President  
**Matt Findley**  
Attorney, Ashburn & Mason P.C.



President Elect  
**Esther Pitts**  
CEO, Mat-Su Health Foundation



Treasurer  
**Damon Darby**  
Financial advisor, Crosby  
Wealth Advisors



Member at Large  
**Matt Hirschfeld, MD, PhD**  
Pediatrician & VP Specialties  
Southcentral Foundation



Member at Large  
**Bruce Hess, DO**  
Pediatrician  
Ptarmigan Pediatrics



Member at Large  
**Laura Brunner, MD**  
Pediatrician, Tanana Valley Clinic,  
Foundation Health Partners  
(Fairbanks Memorial Hospital)



Member at Large  
**Margaret Horvath**  
Executive Director  
Providence Alaska Children's  
Hospital & Women's Services



Member at Large  
**Lindsay Hammer**  
Program Officer  
Rasmuson Foundation



Member at Large  
**Patrick Sidmore**  
Program Coordinator  
Alaska Dept. of Education & Early  
Development

## Our People Staff

A2P2 is a collection of purpose-driven, passionate individuals who call Alaska home and are committed to strengthening its systems of care and to making the connections that all Alaskan families need for their children, and ultimately our state, to thrive.

Tamar Ben-Yosef  
**Executive Director**



Carmen Wenger  
**Director of Programs**



Aggie Fouts  
**Director of Administration & Finance**



Kelsey Gordon  
**Office Administrator**



Reanne Honemann-Queja  
**Partnerships Lead**  
*Program area: Partnerships*



Donna Reisinger  
**Communications & Training Coordinator**  
*Program area: Pediatric Health Communications & Training*



Robyn McComas  
**Help Me Grow Alaska Program Lead**  
*Program area: Help Me Grow Alaska*

Ana Stark  
**Family Support Specialist**  
*Program area: Help Me Grow Alaska*



Colleen McClaren  
**Family Support Specialist II**  
*Program area: Help Me Grow Alaska*



Jamie Ramirez  
**Family Support Specialist**  
*Program area: Help Me Grow Alaska*



Jackie St Clair  
**Family Support Specialist**  
*Program area: Help Me Grow Alaska*



Jordan Randolph  
**Family Support Specialist**  
*Program area: Help Me Grow Alaska*



Lauren May  
**Family Support Specialist**  
*Program area: Help Me Grow Alaska*



Melissa Miller  
**Family Support Specialist**  
*Program area: Help Me Grow Alaska*



Jizel Mendoza  
**Family Support Specialist II**  
*Program area: Help Me Grow Alaska*





# ALL ALASKA PEDIATRIC PARTNERSHIP

## Our Organization

For the last 30 years, A2P2 has helped Alaska’s children and families access the care and support they need by working behind the scenes to make systems change possible. Between 2023 and 2025, our programs strengthened statewide resource navigation and referral connections for families and providers through Help Me Grow Alaska, produced data and policy resources for partners to use in programmatic planning and investments, convened cross-sector stakeholders through our Partnerships work, and delivered Alaska-specific training through Pediatric Health Communications and Training to support providers and improve access to care.

### Mission

**A2P2 transforms systems of care and increases equitable access to health care and related services to ensure all Alaska’s children reach their full potential.**

## Core Values



**Innovation & Excellence**  
We employ a data-driven approach and seek creative solutions and opportunities to advance high standards of care for children and families in Alaska.



**Partnership**  
We build connections and recognize the power in collective voice. We encourage and value cross-communication, shared learning, and the unique knowledge, roles and diversity that all Alaska’s people, communities and organizations bring.



**Systems-approach**  
We approach our work through the lens of systems-change and engage in big picture thinking. We seek constant improvement in the systems of care to effectively support children and families.



**Equity & Inclusion**  
The needs of all Alaska’s kids and families are at the center of our work. We believe all Alaska’s children deserve to thrive and have equitable access to health, social services and opportunities. We believe their diverse voices and perspectives are critical to meeting the needs that exist throughout the state, and to achieving our overarching goal of health equity and equitable access to care and services.



**Individualized Solutions**  
We recognize there is not a one-size-fits-all approach that meets all Alaskans’ needs, and therefore support flexible, individualized, and targeted approaches in order to offer universal services in an equitable way.

## Our Strategic Goals

Our four strategic goals set the direction for the next three years of work. They guide how we prioritize, where we invest our time and resources, and how we measure progress across our four program areas: **Help Me Grow Alaska, Data and Policy, Partnerships, and Pediatric Health Communications and Training.**



**Foster an Internal and External Culture of Data Use to Set Priorities and Drive Decision-Making.**

Solidify A2P2’s role as a trusted voice for data and information on children’s health needs and opportunities in Alaska and ensure the organization’s work is positively impacting health equity throughout Alaska.



**Build Connections and Foster Trusting Relationships Among Providers, Partners, and Policymakers to Close Gaps in the System of Care.**

Leverage A2P2’s strengths as a neutral and trusted convener and connector to support a robust, comprehensive, and equitable system of health care and related services for Alaska’s children and their families.



**Be a Leading Advocate to Improve Coordination and Access to Health Care and Related Services for Alaska’s Children and Families.**

Increase understanding and elevate the importance of equitable access to high-quality health care and related services for children and their families to a higher priority.



**Strengthen Internal Infrastructure & Capacity of A2P2 to Fulfill its Mission**

Ensure A2P2’s team is supported to do the organization’s work effectively and efficiently in a manner that is aligned with A2P2’s core values and with accountability to its mission and funders.

# Our Funding

A2P2's work is sustained through a braided mix of federal and state funding, private foundation grants, contracts, partner contributions, and philanthropic support. **This diversified model allows A2P2 to serve as both a systems-change organization and a direct service provider.**

A2P2's largest program, Help Me Grow Alaska (HMG-AK), is funded primarily through state contracts and private foundation grants, along with a small amount of philanthropic and community support.

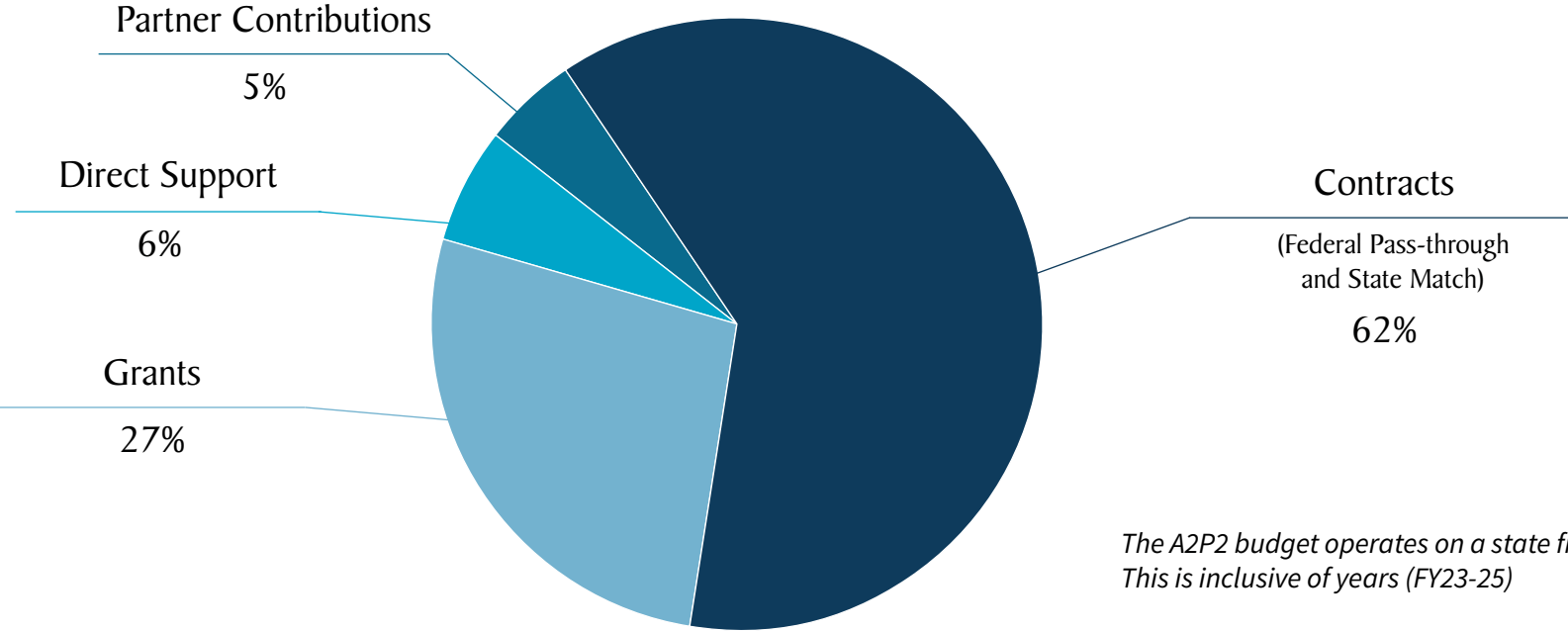
## Future Funding

*Like the systems A2P2 aims to improve, our work does not fit neatly into one funding bucket.*

While grants and contracts make up the vast majority of A2P2's funding, much of that support is time-limited and restricted. Looking ahead, **we are facing the reality that several of our major funding sources are coming to an end.**

Looking ahead, increasing our unrestricted funding is key to our organization's success. Private donations and partner support offer A2P2 flexible funding that allows us to bridge gaps between grant cycles, respond to emerging needs, and sustain our work that cannot always be tied to a single project or contract.

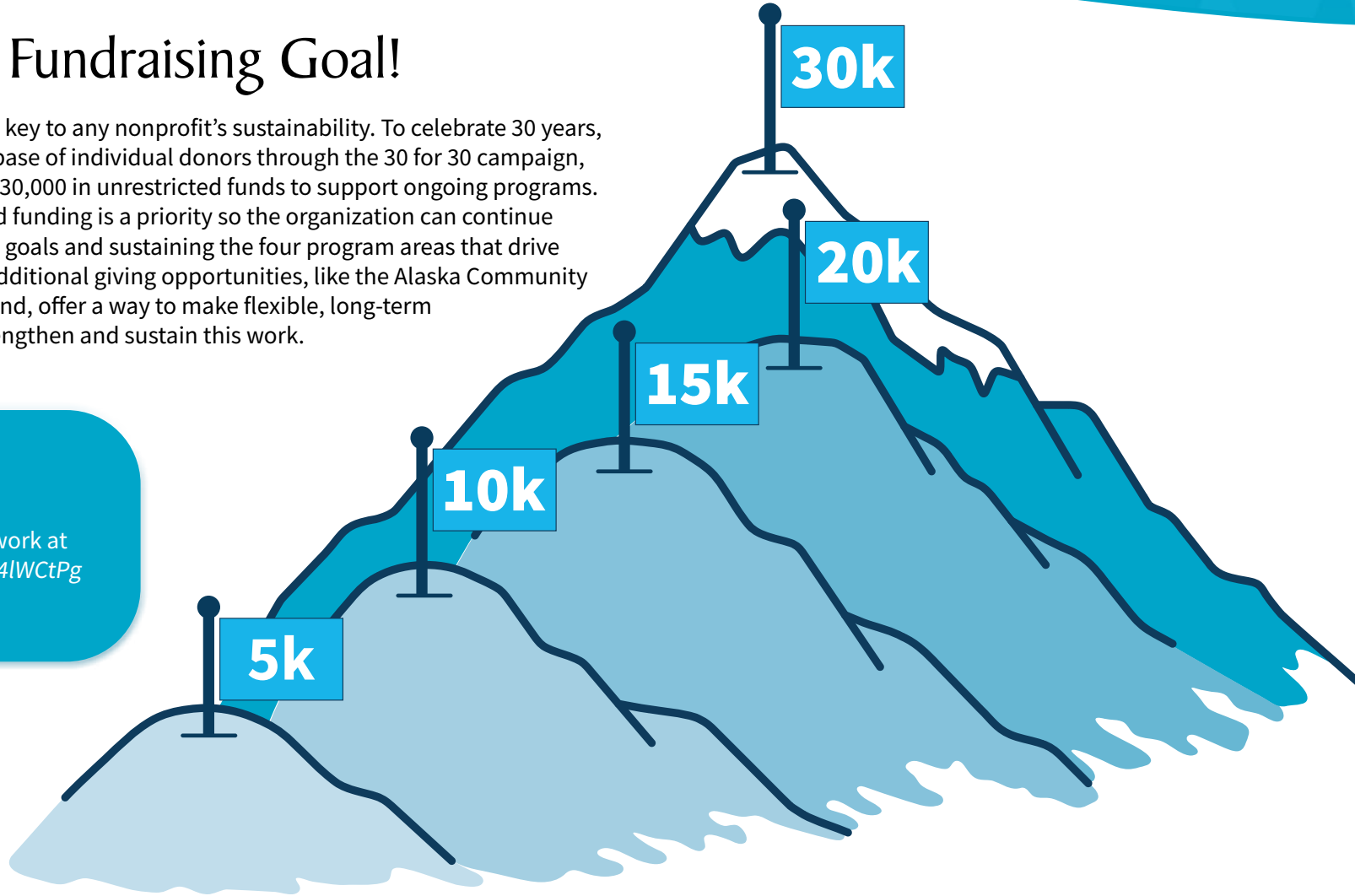
## FY23-25 Financials



*The A2P2 budget operates on a state fiscal year. This is inclusive of years (FY23-25)*

# 30 for 30 Fundraising Goal!

Unrestricted funds are key to any nonprofit's sustainability. To celebrate 30 years, A2P2 is expanding its base of individual donors through the 30 for 30 campaign, with a goal of raising \$30,000 in unrestricted funds to support ongoing programs. Increasing unrestricted funding is a priority so the organization can continue advancing its strategic goals and sustaining the four program areas that drive this work statewide. Additional giving opportunities, like the Alaska Community Foundation Agency Fund, offer a way to make flexible, long-term contributions that strengthen and sustain this work.



Learn More:  
Support this work at <https://bit.ly/4lWctPg>

# The Work Behind the Work

## Our role in strengthening coordination across Alaska

In 2024, A2P2 focused its attention on Southeast Alaska. In many communities, health and social service teams cover large areas and carry heavy caseloads with limited capacity. Even when resources exist, they can be challenging to navigate. Coordinating across programs and services—even within the community—often depends on existing relationships.



During early outreach in the region, our team faced some challenges when trying to schedule a Partnership Meeting with a local agency. Their team’s capacity felt tight, and another meeting felt like one more thing on everyone’s plates. **So we listened and shifted our approach.** A2P2’s Partnerships Lead proposed a simplified visit to learn about the agency’s work and how the families they serve could best be supported with resource navigation through HMG-AK.

The conversation quickly moved from introductions to shared context, identifying the most common areas of struggle for families and where service handoffs tended to break down. As rapport grew, the group talked through practical ways HMG-AK and statewide partner networks could reduce friction and make referrals easier for both providers and families.



**This is the “work behind the work” that leads to true impact.** These moments of connection and alignment rarely show up as a single metric of our work, but they are often where systems change begins—with one relationship, one conversation, and the willingness to adapt to create better support across our regions and state.

## 30 Years of Impact

Thirty years of building connections, closing gaps, and strengthening systems of care.

## Our Impact: A 30-Year Timeline

A2P2 successfully advocated in support of mandatory newborn hearing screening legislation, the expansion of the newborn Blood Spot Screening Program and newborn cardiac screening.

1997

A2P2 convened and actively collaborated with partners in efforts that led to the formation of Alaska's first pediatric subspecialty clinics.

2003-2005

A2P2 joined the first group of organizations and provider agencies to form the Children & Youth with Special Health Care Needs Leadership Group and Summit.



All Alaska Pediatric Partnership (A2P2) was founded in 1996 as a statewide collaborative of **hospitals, tribal health organizations, pediatric providers** and the **Alaska Department of Health & Social Services, Division of Public Health.**

1996



A convening, initiated and hosted by A2P2, led to the launch of Alaska's School Health Initiative and later to the establishment of two school-based health clinics.

2001-2002



# Our Impact: A 30-Year Timeline

2009

In partnership with the **Alaska Mental Health Trust Authority** and the **Alaska State Hospital & Nursing Home Association** (known today as the Alaska Hospital & Healthcare Association - AHHA), A2P2 developed the Alaska Pediatric Subspecialty Distribution Plan.

2014

Initial planning for an Alaska affiliate of the national **Help Me Grow** model began in collaboration with partners from the Early Childhood Comprehensive Systems Program and the Section of Women's, Children's & Family Health at DHSS.

2016

A2P2 and its state partners started foundational planning and implementation activities for **Help Me Grow Alaska**, with a plan to launch the program in three place-based communities (Mat-Su, Kodiak and Norton Sound), supported by funding from the Alaska Early Childhood Comprehensive Systems Grant.

2018

A2P2 contracted with thread's Child Care Resource and Referral service to launch **Help Me Grow Alaska's Centralized Access Point**.



Opened first case  
January 2018

On July 2nd, 2010, distribution and implementation of the **Alaska Pediatric Subspecialty Plan** kicked off with A2P2's presentation of the plan to the coordinating body of this project, DHSS leadership and pediatric agencies.

2010

A2P2 began emphasizing provider education and training on Adverse Childhood Experiences (ACEs), trauma-informed care, and the concept of Patient-Centered Medical Homes. **The first A2P2-hosted Pediatric Symposium was held in 2012 in Girdwood, Alaska.**

2009-2013

**A2P2 formally became a 501(c)(3) nonprofit organization** and hired its first official staff position for Executive Director. Also during this time, A2P2 centered its work on four focus areas under the umbrella of "**First 1,000 Days**." The focus areas were: 1. Immunization promotion and outreach. 2. Promotion of breastfeeding. 3. Prevention of child abuse & neglect. 4. Patient-Centered Medical Homes.

2015

A2P2 formed a leadership team, officially contracted with Help Me Grow National and was designated by DHSS and other community partners as the organizing entity for HMG-AK.

2017

"Just the continual persistence of the case worker was exactly what I needed as a busy working mama."

- Help Me Grow Alaska Parent Survey

# Our Impact: A 30-Year Timeline

“I’m always so impressed by the professionalism of the team and trust they will help any family I send a referral for. It is such an incredible service! I am so grateful”

- Help Me Grow Alaska Provider Testimonial

## 2019

- A2P2 hired the Stellar Group to develop the **Alaska Early Childhood Environmental Scan & Baseline Report on the Condition of Young Children in Alaska**, providing baseline data that has been used to shape statewide early childhood policy.
- A2P2 participated in the Early Childhood Joint Task Force with state, private and tribal partners, and **co-led the Early Childhood Governance Task Force**.
- A2P2 re-initiated the development of an updated **Alaska Pediatric Subspecialty Distribution Plan** with a steering committee of local and out-of-state hospitals and pediatric providers.



- The **Alaska Early Childhood Environmental Scan & Baseline Report on the Condition of Young Children in Alaska** was published and distributed.
- In response to the pandemic closure, A2P2 created a **family-focused Covid-19 resource list** distributed statewide and began collaboration with DHSS on an early childhood strategic plan for Alaska.
- Brought operations and management of the **HMG-AK Centralized Access Point** in-house, hired its first **family support specialist** and expanded the age range served to prenatal to age 26.

## 2020

## 2022

- Alaska joined the New Venture Fund national cohort for **Early Childhood Governance & Finance** reform with a \$200,000 grant and matching funds from the Alaska Mental Health Trust.
- Pediatric Subspecialties work led to the signing of an MOU between Alaska Native Medical Center and Providence Alaska Medical Center establishing the **Alaska Pediatric Subspecialty Collaborative**.
- A2P2 received an M.J. Murdock Charitable Trust Capacity Building Grant, re-launched statewide Partnership Meetings paused due to the Covid-19 pandemic and expanded the HMG-AK team, increasing the organization’s overall capacity.
- The ECN grew to 19 communities. An updated Alaska Pediatric Subspecialty Distribution Plan was presented to the board and to partners.



- Help Me Grow Alaska achieved “full fidelity to the model” with HMG National and recorded a 200 percent increase in family contracts.
- A2P2 launched the **Alaska Early Childhood Network (ECN)** in partnership with the State’s ECCS program as well as completed the **Alaskan adaptation and distribution of the three CDC’s developmental milestones book series** statewide: Baby’s Busy Day, Where is Bear, Amazing Me - It’s Busy Being 3.

## 2021



Opened 100th case  
October 2021



- A2P2 continued leading activities under the **Early Childhood Governance & Finance Grant**, conducted outreach and began researching and publishing policy analysis briefs to support the concept of a proposed Division of Early Childhood with a statewide Early Childhood Board.

## 2023



Opened 300th case  
August 2023

# Our Impact: A 30-Year Timeline



Opened 800th case  
October 2025

## 2025-2026

A2P2 celebrated **30 years of positive impact** as a statewide leader of initiatives, collaborative partnerships and educational advocacy **promoting children's health and improving the systems that care for them.**

Since 2015, A2P2 hosted **60 Partnership Meetings in 15 communities** around the state; convened hundreds of individuals who provide care, services and education to Alaska's children; and support connections that led to measurable improvements in access and quality of pediatric health care and related services.



A2P2 strengthened its focus on **data-driven advocacy** and internal sustainability. Continued leadership on state-level systems change and cross-sector coordination to **elevate the early childhood sector and improve child and family outcomes.**

DOH and A2P2 partnered to host the first Alaska Home Visitor Summit in April 2024, and launched the first **Alaska Home Visitor Alliance.**

## 2024



Opened 500th case  
September 2024

**30 years of impact is just the foundation.**  
What follows is the work happening now through A2P2's core programs.

# Help Me Grow Alaska

## Program Impact 2023-2025

**8,519** Total cases since program inception

**6,466** Total cases between 2023-2025

**29 of 30** Alaska boroughs/census areas served



**70%** Percent of cases connected by HMG-AK

**86.3%** Percentage of cases referred to HMG-AK by a provider (all of which received follow-up from HMG-AK staff to close the feedback loop)

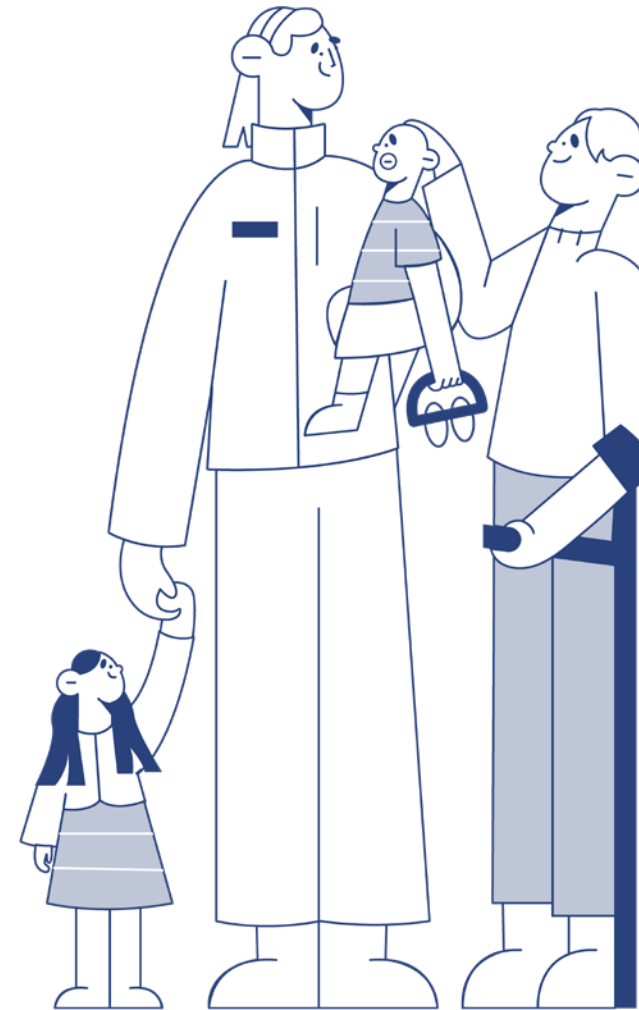
*The Help Me Grow Alaska staff person was friendly and understanding and I felt like they knew exactly what to do to provide help for my child.*

*- Parent Testimonial*

Strategic Goals Met: 1, 2, 3, 4

## About Help Me Grow Alaska

Help Me Grow Alaska serves as a trusted, statewide access point that helps families navigate complex systems of care. From prenatal through age 26, Family Support Specialists listen, assess needs, and provide warm, individualized connections to community resources and needed services. This coordination reduces confusion and delays, supports follow-through, and gives both families and providers a clearer pathway through health, early childhood, behavioral health, education, and social services. In doing so, the program advances A2P2's strategic goals by building cross-sector relationships that close gaps in the systems of care, improving coordination and access, and strengthening the infrastructure that supports families statewide.



### Program Impact Story Where Do I Start?

After her infant was discharged from the hospital in Anchorage, a mom in a rural community told a Family Support Specialist (FSS) at Help Me Grow Alaska that she thought she just needed diapers. She also knew the hospital had medical concerns about her baby, but she wasn't sure what they were. With her permission, they called the referring provider, learned the baby had complex medical needs, and that TEFRA coverage was urgent. The FSS called the mom back, explained the next steps, and connected her with the right office in her local hub community to start the process for TEFRA and follow-up care.

Without that follow-through, this could have easily turned into delays, missed steps, and a parent trying to piece together a complicated system alone. Instead, Help Me Grow Alaska helped the mother understand what she could do next, connect to the right agencies and providers, and move forward with a real plan, so her child could get the care and support they needed. This is what family navigation looks like a lot of the time. Helping caregivers figure out where to start and connecting them to the supports they need.

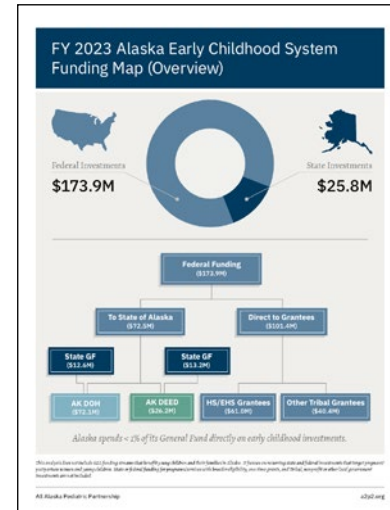
## Program Impact 2023-2025

From 2021–2025, A2P2’s Data & Policy work produced the publications below, giving partners trusted, neutral resources to plan, invest, and strengthen systems for children and families.

### Publications

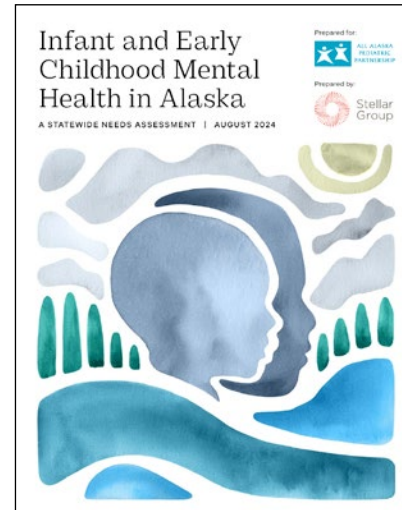
#### **Alaska Early Childhood System Funding Map (2023)**

A2P2’s FY23 Alaska Early Childhood System Funding Map and companion brief help make a fragmented system visible. By tracing state and federal early childhood funding streams from their sources through multiple departments and divisions, we show why coordination and accountability can be so difficult. Partners use this resource to support planning, advocacy, and conversations about governance and finance reform.



#### **Infant and Early Childhood Mental Health in Alaska: A Statewide Needs Assessment (2024)**

A2P2’s 2024 Infant & Early Childhood Mental Health in Alaska Needs Assessment included six recommendations to strengthen the system. Since its release, partners have already begun putting recommendations into action, including Growing Minds, an infant and early childhood mental health support line launched through Help Me Grow Alaska in January 2026 to provide free support to providers who otherwise lack access to IECMH consultation.



Strategic Goals Met: 1, 3

## About Data & Policy

A2P2’s Data & Policy program strengthens how Alaska uses information to plan, invest, and improve services for children and families, while also helping move that information into policy and systems change. Over the last five years, this work has positioned A2P2 as a trusted and neutral steward of data and information on children’s health needs and opportunities. The team produces reports, briefs, and tools that partners use for program planning, advocacy, and state investments.

Since publishing the Alaska Early Childhood Environmental Scan and Baseline Report in 2021, A2P2 has taken on a leadership role in advancing early childhood governance and finance reform in Alaska. Building on years of groundwork, A2P2 launched the Early Childhood Partnership (ECP): Together for Alaska’s Kids in early 2025 to unify the sector’s voice and lay the foundation for governance and finance reform.

### Program Impact Story Growing Minds

In 2024, A2P2 published the **Infant and Early Childhood Mental Health in Alaska Statewide Needs Assessment**, including six recommendations to strengthen the system. Since the report’s release, partners across the sector have already begun moving recommendations into action.

One example is Growing Minds, an infant and early childhood mental health support line launched through Help Me Grow Alaska in January 2026. Growing Minds offers free support to providers caring for infants and young children who are not otherwise eligible for consultation. We strive to turn what families and providers are experiencing into something this sector can act on, and help new solutions take root.

# Pediatric Health Communications & Training

## Program Impact 2023-2025

**350+** Pediatric providers attended A2P2's two-day Pediatric Symposium

**3,313** PAL-AK cases supported with care coordination through Help Me Grow Alaska

**24** Programs supported by A2P2 to use the ASQ Online system

**3** New translations added to Alaska versions of the Amazing Books: Tagalog, Russian, Spanish

### ★ About Pediatric Health Communications & Training

A2P2's Pediatric Health Communications & Training program strengthens Alaska's pediatric system of care by increasing education, awareness, and access to best practices that support culturally and regionally appropriate care.

### ★ Strengthening Alaska Pediatric Relationships for over 30 years

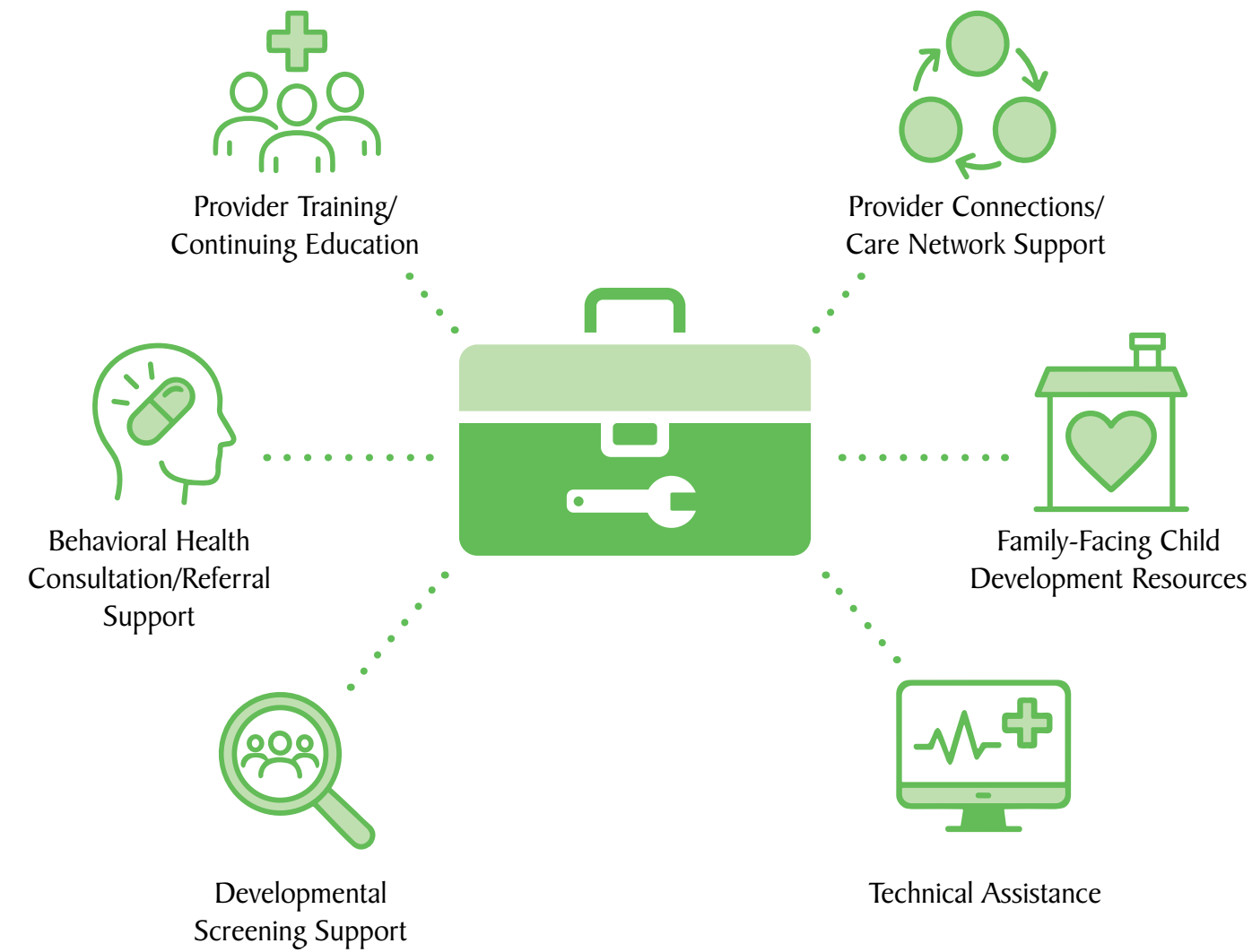
The Pediatric Symposium continues to have a meaningful impact on attendees, who describe the content as timely and affirming, fostering connection and support across Alaska's pediatric community. Participants expressed strong enthusiasm for future conferences and appreciation for the availability of virtual access, reinforcing the importance of continuing high-quality, accessible pediatric education statewide.

# Core Program Functions

## Our Toolbox

A2P2's core program tools work together to strengthen systems of care across Alaska by supporting providers, connecting partners, and expanding access to resources for children and families. From training and technical assistance to screening support, these efforts are designed to be practical, culturally responsive, and grounded in real-world application.

By building provider connections and improving coordination statewide, A2P2 helps ensure that communities have the knowledge, tools, and support needed to identify needs early and respond effectively. Together, these tools create a more connected, capable network that improves outcomes and supports long-term impact.



# Core Programs Partnerships

## Program Impact 2023-2025

- 9 Home Visiting Models represented through HVA

---

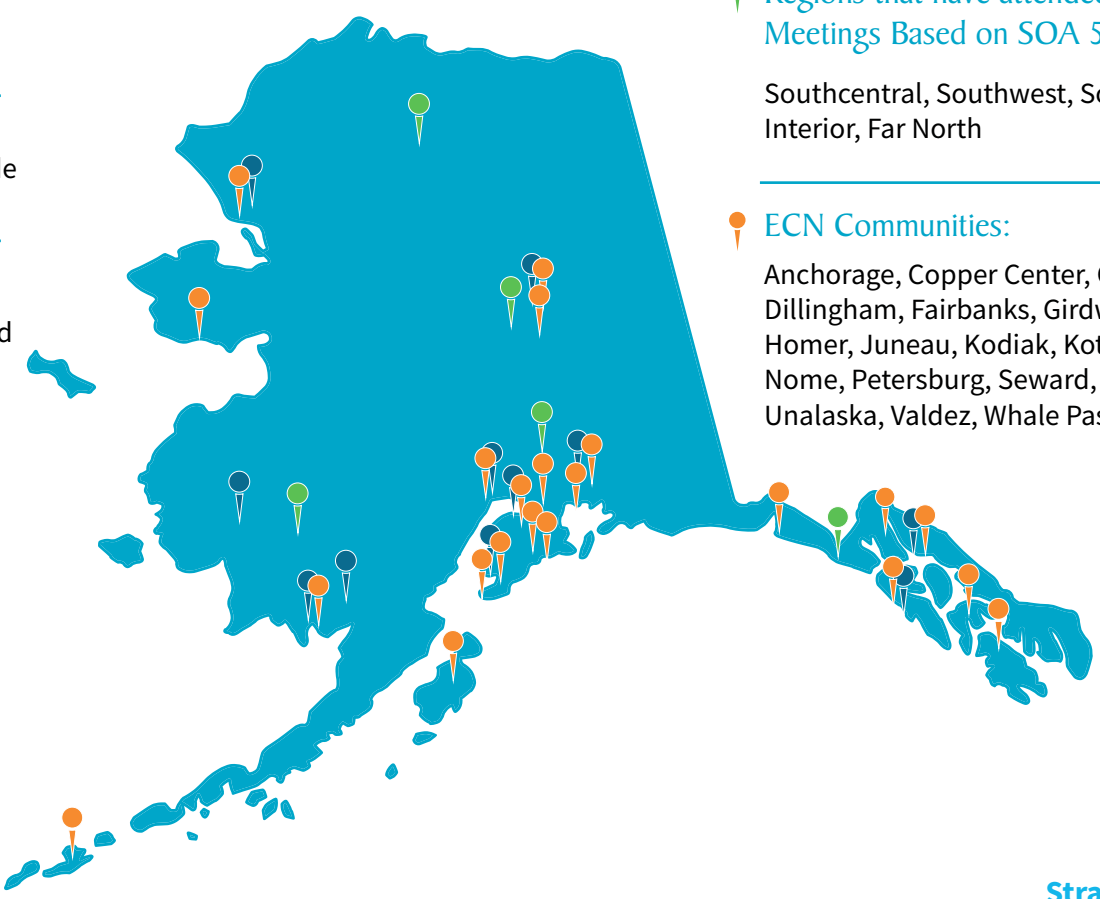
- 22 Communities participating in ECN

---

- 25 Partnership Meetings held statewide

---

- 38 Medical clinics, social service providers, and local agencies visited through community site visits



- Communities that hosted Partnership Meetings:**  
Anchorage, Mat-Su Valley (Wasilla), Juneau, Fairbanks, Copper Center, Kotzebue, Bethel, Sitka, Homer, Dillingham

---

- Regions that have attended HVA Connect! Meetings Based on SOA 5 Distinct Regions:**  
Southcentral, Southwest, Southeast, Northern Interior, Far North

---

- ECN Communities:**  
Anchorage, Copper Center, Central Kenai, Dillingham, Fairbanks, Girdwood, Healy, Hoonah, Homer, Juneau, Kodiak, Kotzebue, Mat-Su Valley, Nome, Petersburg, Seward, Seldovia, Sitka, Unalaska, Valdez, Whale Pass, Yakutat

Strategic Goals Met: 2, 3

## About Partnerships

A2P2's Partnerships Program is at the core of how we are able to successfully increase coordination across Alaska's pediatric and early childhood system. As a neutral and trusted convener, A2P2 connects the people who rarely have time to coordinate with each other: medical providers, therapy teams, social services, early care, statewide partners, and others who care for kids in one capacity or another. We do this so that families are not left navigating a fragmented system alone. Partnership and collaboration are core to this work, grounded in A2P2's values of equitable and inclusive health and individualized solutions, because what works in one community may not fit another.

The Partnerships Program is currently built on three connected efforts: monthly Partnership Meetings, co-facilitation of the Alaska Early Childhood Network (ECN) for statewide advocates and partners, and co-facilitation of the Alaska Home Visitors Alliance (HVA) to support professional development and peer learning for all home visiting models in Alaska. Together, these networks strengthen service quality, improve shared understanding of local gaps and resources, and provide technical assistance that helps communities problem-solve in real time.

## Program Impact Story Community Solutions

During a Partnership Meeting visit in the Bristol Bay Region, a health care provider who is also a mom of young children shared how difficult it has been to access basic baby supplies. She told us she had to put her six-month-old in size 6 diapers because infant sizes were unavailable and would not be restocked for a long time. Eventually, she arranged for size 3 diapers to be flown to her home through Alaska Airlines, costing hundreds of dollars and a lot of time spent coordinating the logistics.

After hearing her story, the Partnerships Lead connected her with the local Early Childhood Network member and home visitors to help identify a better solution for families in the region. Dillingham and surrounding villages did not have a diaper pantry or a way to store supplies for families in need. Using funds allocated to ECN communities through the Preschool Development Grant, Dillingham is now working to establish its first Diaper Pantry, including diapers, formula, and other essentials for babies and families.

## Contributing Partners

While grants and contracts make up the majority of our funding, this work would not be possible without our key contributing partners. Through unrestricted financial support and partnership with A2P2's Board of Directors, they have helped build the trust and relationships that underpin everything we do.

**We are deeply grateful to our founding partners and those who joined in later years for valuing the health and wellness of Alaska's children, and for believing in the role A2P2 plays in supporting families and advocating on their behalf.**



\* Founding Partners

## Ways to Support

As the All Alaska Pediatric Partnership marks 30 years, we're inviting more Alaskans to be part of what comes next! Consider making a donation or becoming a partner to support the work that helps children and families access the care and support they need.

### Alaska Community Foundation Agency Fund

For larger gifts and legacy giving, the A2P2 Agency Fund at the Alaska Community Foundation is a long-term investment that can grow over time. Gifts can also be made in honor or memory of someone.

### Corporate and Public Support

A2P2's foundation is in relationships. We are always looking for dedicated partners to support our work. If your business or organization is interested in becoming a contributing partner or exploring a sponsorship or public partnership, please reach out at [admin@a2p2.org](mailto:admin@a2p2.org) or give us a call at 907-921-4233.

Learn More About  
the ACF Fund:



<https://bit.ly/4IWctPg>

Donate to 30 for 30:



<http://bit.ly/4vevdm7>

## 30 for 30

Help us reach our 30th anniversary fundraising goal by giving through our Give Lively campaign.

**Fundraising Goal (2026–2028):**

**\$30,000**

Many thanks for all  
your support!



ALL ALASKA  
PEDIATRIC  
PARTNERSHIP